



TopSec 730

Reliable encryption of Euro-ISDN

- ◆ Encryption of voice, data, fax (group 4) and video conferences
- ◆ Transmission modes plain/encrypted
- ◆ Up to 30 simultaneous connections
- ◆ Can be connected to Euro-ISDN S_{2M} interface
- ◆ Secure remote maintenance via Euro-ISDN
- ◆ Installation via plug & play
- ◆ Ease of operation and menu-guided administration



ROHDE & SCHWARZ

Multifunctional use in Euro-ISDN encryption

Increased networking of business and private communications provides ideal targets for eavesdroppers and spies. As a result, there has been a dramatic increase in illegal attacks on telephone and data networks.

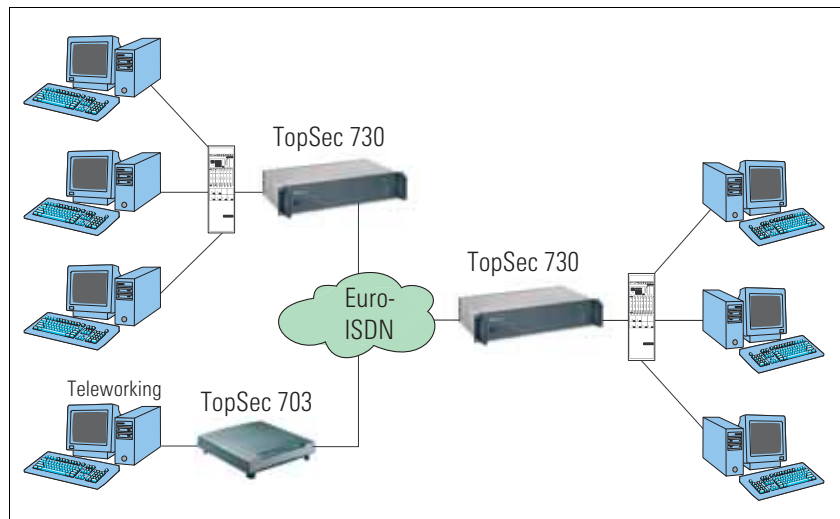
But how can you effectively protect communication against unauthorized intrusion?

The TopSec 730 has been designed to protect communication between Euro-ISDN against eavesdropping attacks. It provides reliable encryption of up to 30 simultaneous connections for the following basic services:

- ◆ Voice
- ◆ Data
- ◆ Fax (group 4)
- ◆ Video conferences

Use of top-security crypto technologies

With the TopSec 730, information can be exchanged via Euro-ISDN subscribers without any risk: the only prerequisite is that the called station must be equipped with partner devices from the TopSec family.



Use of the TopSec 730 (in conjunction with the TopSec 703)

Encryption is carried out separately for the 30 basic channels. To attain maximum security, a combination of two algorithms is used: an asymmetrical algorithm with a 1024-bit key for key agreement, and a symmetrical algorithm with a 128-bit key for data encryption.

In the encryption mode, the TopSec 730 and the called stations automatically agree on a new 128-bit key for each connection established. The 128-bit key is randomly determined from 10^{38} possibilities and erased as soon as the communication is terminated.

Tap-proof data transmission through plug & play

The TopSec 730 is simply connected into the S_{2M} link and encrypts all information transferred via Euro-ISDN. The transmission mode (plain/encrypted) is selected by adding a code number to the numbers of the called stations. The data server or the telecommunication system are thus reliably protected against unauthorized intrusion. Up to 30 called stations can communicate confidentially. LEDs on the device indicate encrypted transmission.

Specifications

Power supply (via power cable)	100 V to 240 V, 50 Hz to 60 Hz
Current drain	0.4 A
Power consumption	max. 10 VA
Operating temperature	+5°C to +40°C
Storage temperature	-20°C to +70°C
Relative humidity	5% to 85%

Connectors	2 S_{2M} female
Dimensions (W × H × D) in 19" cabinet	448 mm × 88 mm × 241 mm 585 mm × 90 mm × 300 mm
Weight (incl. cable)	5.5 kg

Ordering information

TopSec 730	3531.6604
------------	-----------



ROHDE & SCHWARZ

ROHDE & SCHWARZ SIT GmbH · Agastraße 3 · 12489 Berlin · Germany · Telephone (+4930) 65884-231
Fax (+4930) 65884 184 · E-mail: contact@sit.rohde-schwarz.com · www.sit.rohde-schwarz.com